

SA 101 UK/2

PRISECTER  
**PRL**  
**PRIMARY**  
**SAMPLERS**

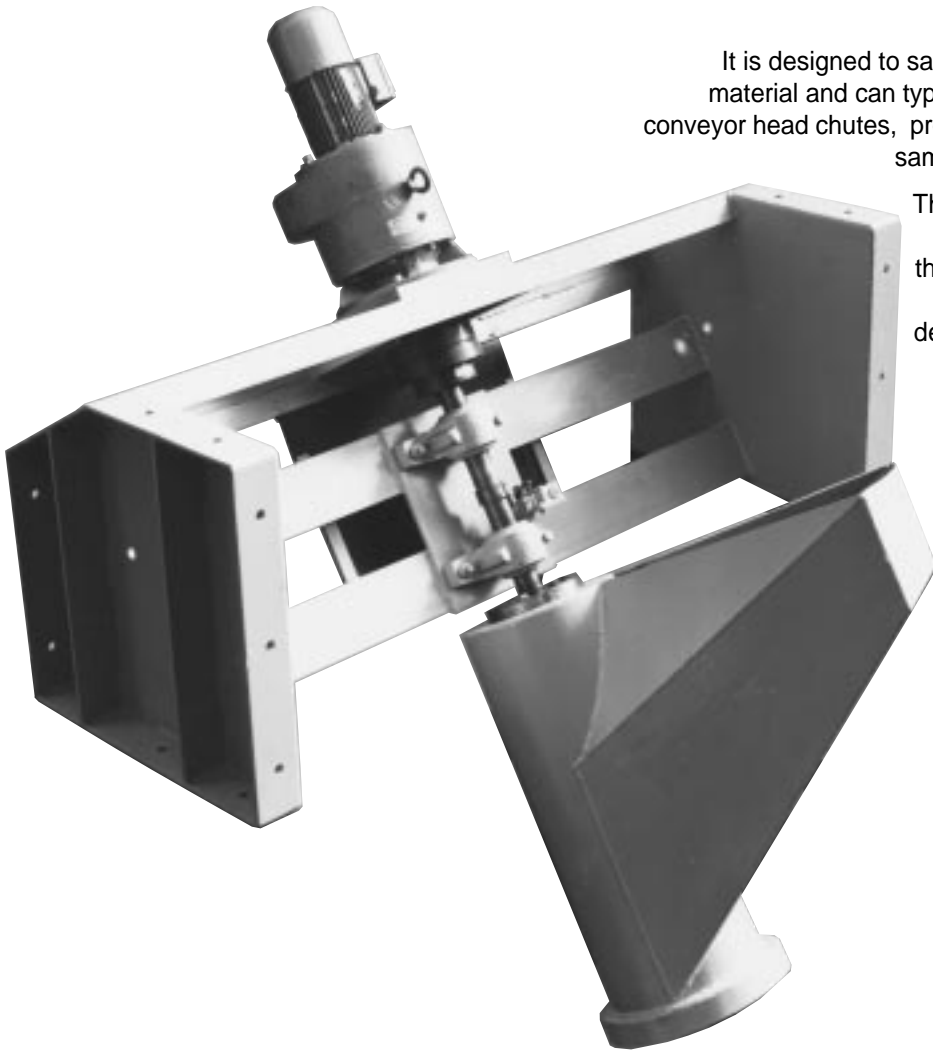


The PRL primary sampler is of simple robust design suitable for the most arduous conditions, with one moving part facilitating easy maintenance.

It is designed to sample in flight particulate material and can typically be installed within conveyor head chutes, providing a representative sample of the main stream.

The sample cutter rotates at a constant speed through the falling stream of material, at pre-determined intervals or at a signal from a belt weigher or other such device.

Travel is terminated by a limit switch operated braked motor.



**Features**

- Each cutter is selected to suit the particular application requirements of maximum particle size and sample increment mass.
- Increment mass is directly proportional to cutter opening and the rotational velocity at which the cutter travels through the falling material. Variation in material flow rate will vary the increment taken in direct proportion. The increment mass can therefore be accurately controlled.
- Inclination of the cutter axis allows its location close to the head drum and full increment discharge is ensured.
- The PRL sampler is a compact unit suitable for installation in both existing and new plant. It is supplied complete with a control panel incorporating timers and motor control/protection suitable for automatic or manual control.

# PRL PRIMARY SAMPLERS

## Machine Selection Procedure

- Select sampler size from dimension table (below).
- Determine cutter angle from Fig. 1
- Establish sample size from Fig. 2

Example:

Belt Width 1200mm  
 Max Particle 38mm  
 Belt Capacity 450tph  
 Machine selection = PRL 900 for a 1200 max belt width.  
 Cutter angle - 13° for 38mm particle from Fig. 1. Use nearest angle above ie: 15°.  
 Sample size = 28.5kg from Fig.2 using 15° cutter and a PRL 900 machine.

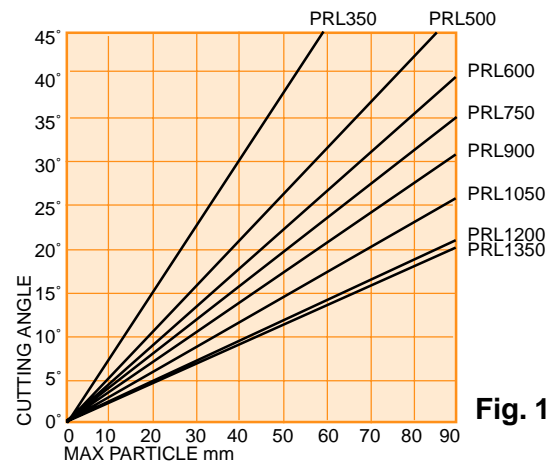


Fig. 1

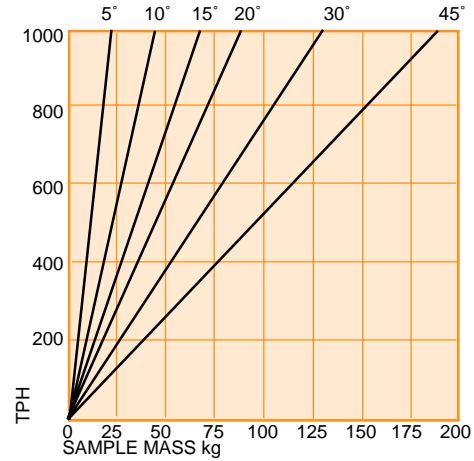
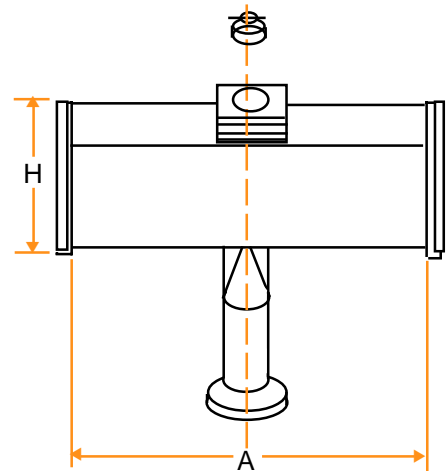
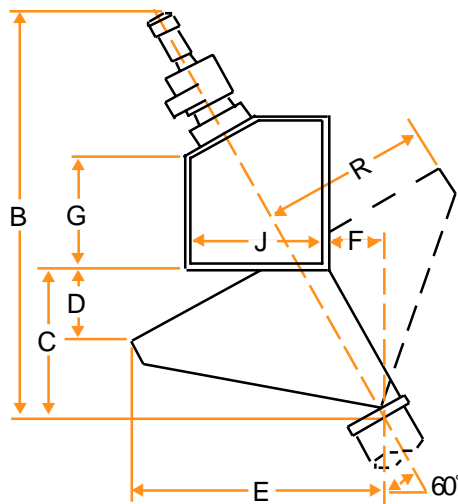


Fig. 2

Belt Width	Model	R	A	B	C	D	E	F	G	H	J	kg	Motor Power kW
500	PRL350	350	750	1630	465	145	590	85	510	670	660	250	0.37
600	PRL500	500	1050	1720	580	230	795	155	510	670	660	320	0.75
800	PRL600	600	1250	1720	580	280	880	155	510	670	660	390	0.75
1000	PRL750	750	1550	1850	710	350	1085	230	510	670	660	450	0.75
1200	PRL900	900	1850	2500	775	345	1295	275	755	1030	940	1090	2.20
1400	PRL1050	1050	2150	2610	885	420	1490	340	755	1030	940	1150	2.20
1600	PRL1200	1200	2450	2740	1010	495	1690	415	755	1030	940	1250	3.00
2000	PRL1350	1350	2750	2790	1110	570	1880	470	755	1030	940	1375	4.00

Dimensions in mm. All selections must be confirmed by ERIEZ upon full application/duty data.



ERIEZ MAGNETICS EUROPE LIMITED

MANUFACTURING DESIGN LABORATORY HEADQUARTERS  
 BEDWAS HOUSE INDUSTRIAL ESTATE  
 BEDWAS, CAERPHILLY, CF83 8YG UK  
 Telephone: 029 2086 8501 Fax: 029 2085 1314  
 Int Tel: +44 29 2086 8501 Int Fax: +44 29 2085 1314  
 E-mail: eriez@eriezeurope.co.uk www.eriez.com

MANUFACTURING AFFILIATES IN: AUSTRALIA BRAZIL CANADA INDIA JAPAN MEXICO SOUTH AFRICA USA

