

Shake-out Systems for the Separation of Castings and Sand



- **High availability and operating safety** thanks to state-of-the-art design and high quality standards.
- **Minimum Maintenance** thanks to the use of Schenck low-maintenance directed-force exciters and coupling shafts.
- **Simple, Rapid Exchange of Wear and Spare Parts** thanks to the use of components held together by hex-head/Huck bolts.
- **Quality Assurance** thanks to test-run and measurement of the proper frequency.
- **Reduction of Rejects** thanks to high-frequency systems with small amplitude.
- **„Vario“ Shake-out Systems** with adjustable vibration angle and drive speeds for the adaptation of the shake-out behaviour in case of a strongly varying casting spectrum (Special Sheet).

Application

The Shake-out Feeders are used for the separation of castings and sand in automatically operating moulding plants.

Whether it be plants with or without flasks, small- or large-size moulds, short or long cycle times in your moulding plant, castings of iron, steel, or aluminium, you will realize the ideal separation of castings and sand for your particular application with Schenck Shake-out Systems.

Set-up

Sturdy and state-of-the-art design,

- easily exchangeable grids,
- and a proven drive system with low-maintenance directed-force exciters
- ensure the high quality standard of the equipment *made in Germany* under the harshest conditions even in three-shift operation.

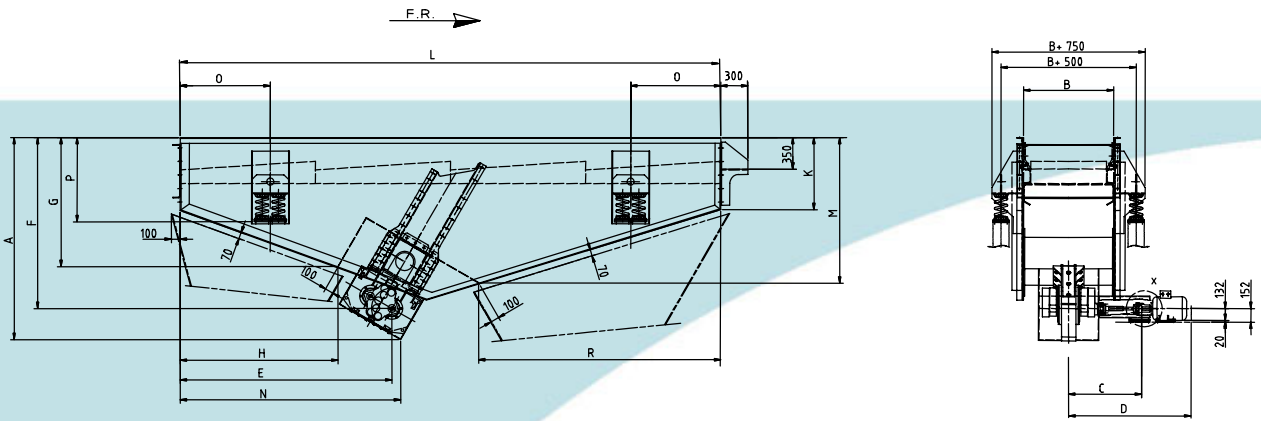
Performance

Schenck directed-force exciters are insensitive to load and ensure a constant shake-out effect over the entire length of the machine.

Optimum tuning of grid type and vibration data to your casting program allows for a high shake-out efficiency with gentle handling of the castings.

The used sand passes through the grids onto conveyors below, the castings will be conveyed on Vibro Feeders, cooled, and/or separated from the cycle as required. Also for such duties you will find a suitable solution among Schenck's range of vibratory equipment.

STG

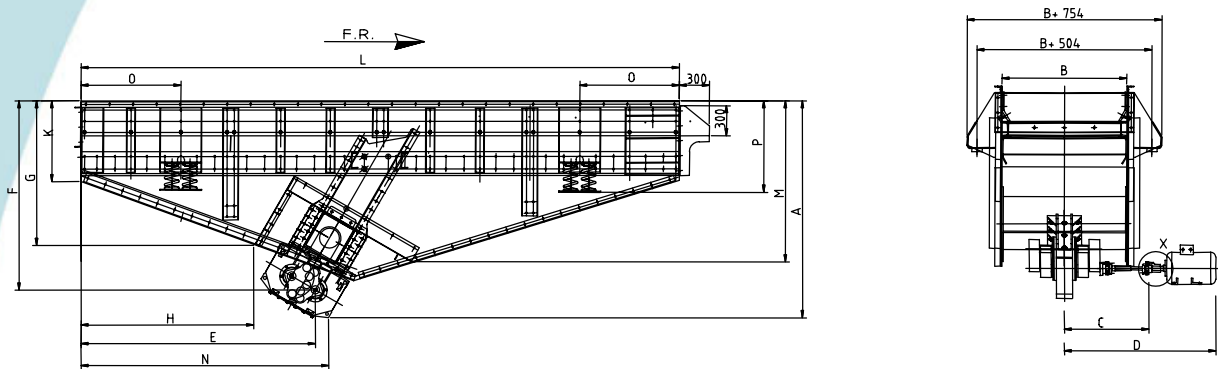


Shake-out Feeder STG

Operating speed: 1000 min⁻¹

Length L in mm	Width B in mm	Exciter Nos./Type	Motor requirements in kW	Approx. weight in kg	Dimensions in mm												
					A	C	D	E	F	G	H	K	M	N	O	P	R
4500	1000	1 DF 401 S	7,5	3900	1800	810	1400	1800	1500	1000	1100	610	1250	1950	750	880	2020
4500	1250	1 DF 401 S	7,5	4200	1800	810	1400	1800	1500	1000	1100	610	1250	1950	750	877	2020
4500	1400	1 DF 401 S	7,5	4500	1800	810	1400	1800	1500	1000	1100	610	1250	1950	750	875	2020
6000	800	1 DF 401 S	7,5	3800	2200	810	1400	2350	1875	1450	1750	800	1650	2500	1000	880	2900
6000	1000	1 DF 401 S	7,5	4400	2200	810	1400	2350	1875	1450	1750	800	1650	2500	1000	875	2900
6000	1250	1 DF 401 S	7,5	5000	2200	810	1400	2350	1875	1450	1750	800	1625	2500	1000	870	2900
6000	1400	1 DF 501 S	11,0	5900	2250	810	1460	2365	1846	1400	1680	800	1600	2520	1000	875	2775

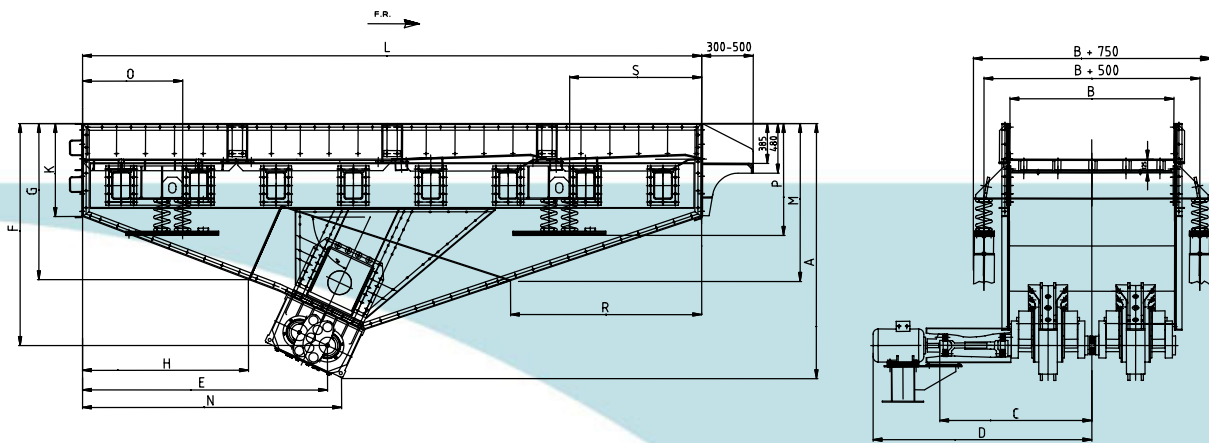
STG-H



Shake-out-Feeder STG-H

Operating speed: 1500 min⁻¹

Length L in mm	Width B in mm	Exciter Nos./Type	Motor requirements in kW	approx. Weight in kg	Dimensions in mm												
					A	C	D	E	F	G	H	K	M	N	O	P	R
4500	1000	1 DF 401 L	7,5	4200	1800	810	1400	1800	1500	1000	1100	610	1250	1950	750	877	2020
4500	1250	1 DF 401 L	7,5	4600	1800	810	1400	1800	1500	1000	1100	610	1250	1950	750	875	2020
4500	1400	1 DF 401 L	7,5	5000	1800	810	1400	1800	1500	1000	1100	610	1250	1950	750	870	2020
6000	800	1 DF 401 L	7,5	4600	2180	810	1400	2360	1820	1350	1680	800	1640	2450	1000	875	2900
6000	1000	1 DF 401 L	7,5	5000	2180	810	1400	2360	1820	1350	1680	800	1640	2450	1000	875	2900
6000	1250	1 DF 5 L	11,0	6000	2230	810	1750	2360	1830	1350	1680	800	1640	2450	1000	910	2775
6000	1400	1 DF 5 L	11,0	7000	2230	1105	1750	2360	1830	1340	1630	800	1640	2460	1000	920	2775



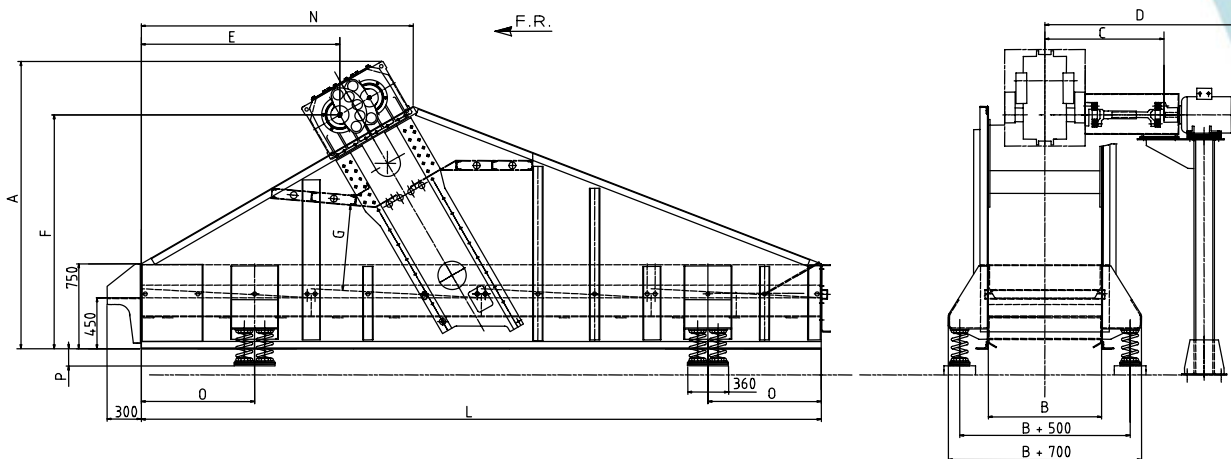
Shake-out Feeder STG-H Width > 1600 mm Operating speed: 1500 min⁻¹

Length L in mm	Width B in mm	Exciter Nos./ Type	Motor requirements in kW	Approx. weight in kg	Dimensions in mm													
					A	C	D	E	F	G	H	K	M	N	O	P	R	S
6000	1600	2 DF 5 L	15	8200	2485	1630	2220	2370	2145	1510	1605	900	1525	2495	970	982	1855	1280
6000	1800	2 DF 5 L	22	9500	2500	1650	2360	2375	2150	1510	1605	900	1525	2510	970	977	1855	1280
6000	2000	2 DF 5 L	22	10000	2500	1750	2460	2375	2150	1510	1605	900	1525	2510	970	988	1855	1280
6000	2200	2 DF 5 L	22	10500	2500	1850	2560	2375	2150	1510	1605	900	1525	2510	970	987	1855	1280

Shake-out Feeder STG Operating speed: 1000 min⁻¹

6000	1600	1DF501S	15	8300	2500	1050	1750	2375	2150	1510	1605	900	1525	2510	970	982	1800	1280
6000	1800	1DF601S	22	9600	2560	1120	1840	2370	2240	1460	1500	900	1540	2600	970	990	1800	1280
6000	2000	1DF601S	22	10200	2560	1220	1940	2370	2240	1460	1500	900	1540	2600	970	988	1800	1280
6000	2200	1DF601S	22	10800	2560	1320	2040	2370	2240	1460	1500	900	1540	2600	970	986	1800	1280
7500	1400	1DF601S	22	10700	2850	920	1640	3100	2520	1750	2200	1120	2100	3260	970	986	3300	1280
7500	1600	1DF601S	22	11300	2850	1020	1740	3100	2520	1750	2200	1120	2100	3260	970	984	3300	1280
7500	1800	1DF601S	22	12000	2850	1120	1840	3100	2520	1750	2200	1120	2100	3260	970	982	3300	1280
7500	2000	2DF501S	30	12900	2770	1750	2460	3050	2470	1750	2200	1120	2100	3210	970	980	3300	1280
7500	2200	2DF501S	30	13600	2770	1850	2560	3050	2470	1750	2200	1120	2100	3210	970	978	3300	1280

STF

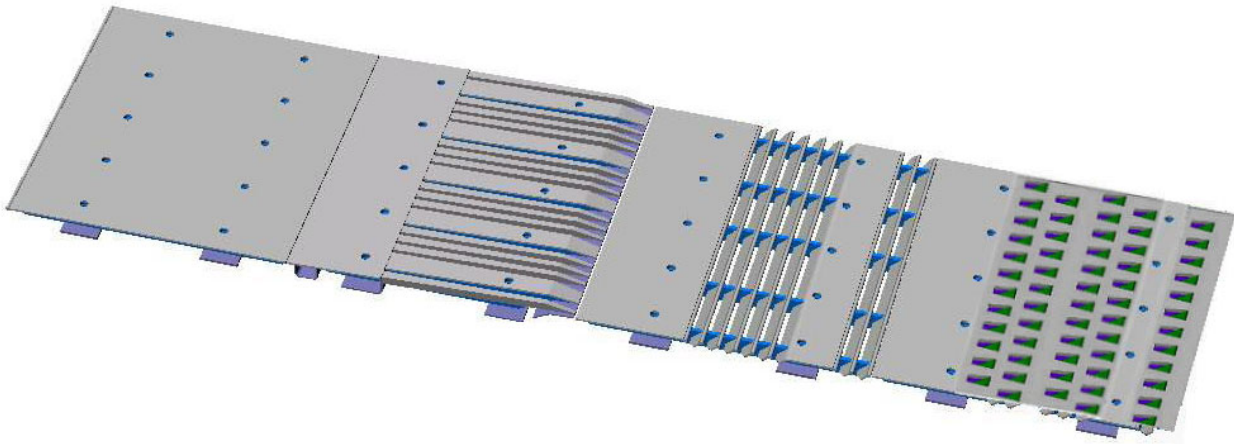


Shake-out Feeder STF-H Operating speed: 1500 min⁻¹

Length L in mm	Width B in mm	Exciter Nos./Type	Motor requirements in kW	Approx. weight in kg	Dimensions in mm								
					A	C	D	E	G	N	O	P	F
6000	800	1 DF 401 L	7,5	4400	2450	810	1400	1790	850	2160	1000	120	2060
6000	1000	1 DF 401 L	7,5	5000	2450	810	1400	1790	850	2160	1000	115	2060
6000	1250	1 DF 5 L	11,0	5900	2500	1105	1750	1777	730	2165	1000	108	2070
6000	1400	1 DF 5 L	11,0	6500	2500	1105	1750	1777	730	2165	1000	106	2070

Grids for Shake-out Feeders

- individual adaptable according to the type of castings



Blind plate

Longitudinal-slot grid

- for heavy castings
- low risk of jamming

Transverse-slot grid

- for small to medium castings
- effective break-up of lumps

Perforated plate

- for fragile castings where there is
 - risk of jamming
 - reduced separation of castings and sand (no optimal lump reduction)



Measuring and Process Systems
 SCHENCK PROCESS GmbH
 D-64273 Darmstadt
 Telefon: +49 (0) 61 51-32 10 28
 Fax: +49 (0) 61 51-32 11 72
 E-Mail: bvs.process@schenck.net
 www.schenck-process.de

The **QÜRR** Group

Keep in Motion